

CUSTOM CONSTRUCTIONS BASED ON MODULAR SOLUTIONS

Our modular product lines		Emergency egress	Access at heights	Building façade maintenance
1	Retractable ladders	●	●	●
2	Exterior staircases in aluminium	●	●	●
3	Permanent ladders, with or without cage	●	●	●
4	Mobile access systems	●	●	●
5	Accessory safety solutions	●	●	●

Austria:
Hepeka Handelsgesellschaft mbH
 Gerasdorferstraße 61/2/6
 A 1210 Wien
 T: +43 1 2900136
 F: +43 1 2900137
 m: info@hepeka.com

distributed by
Hepeka

Poland:
Hepeka - Poland Sp. z o.o.
 ul. Staropogonska 35/II
 PL 41-200 Sosnowiec
 T: +48 32 2901070
 F: +48 32 2901079
 m: info@hepeka.com



ALUMINUM CONSTRUCTIONS FOR YOUR SAFETY



Composition

Our permanent access systems are composed of working structures that move over a series of fixed rails, which are attached to the building. From the working structure one can safely access the façade for cleaning or maintenance purposes. The working structure is designed to meet your specific requirements. It can take many different forms, such as a vertical ladder with or without movable platform, a reinforced ladder (vertical, horizontal or sloped), a staircase,

a solid gantry, a gantry that in turn has moveable parts, etc.

The rails carry and guide the working structure. The connection between the rails and the moving parts is made by bogies. In most designs, the movement of the working structure is powered by human force only. JOMY offers two types of rail structures: round and I-shaped. The round rail is used as a "floor" for the structure (the moving part rests on the rail). The I rail is used as a "ceiling" for the structure (the moving part hangs from the rail).

From concept to operations

Based on the desired principles of operation we typically propose one or more designs, using our experience to ensure the designs are practically feasible and provide the desired ease of use.

Platforms

We also produce custom platforms to be integrated in third party building maintenance units.

RAILS



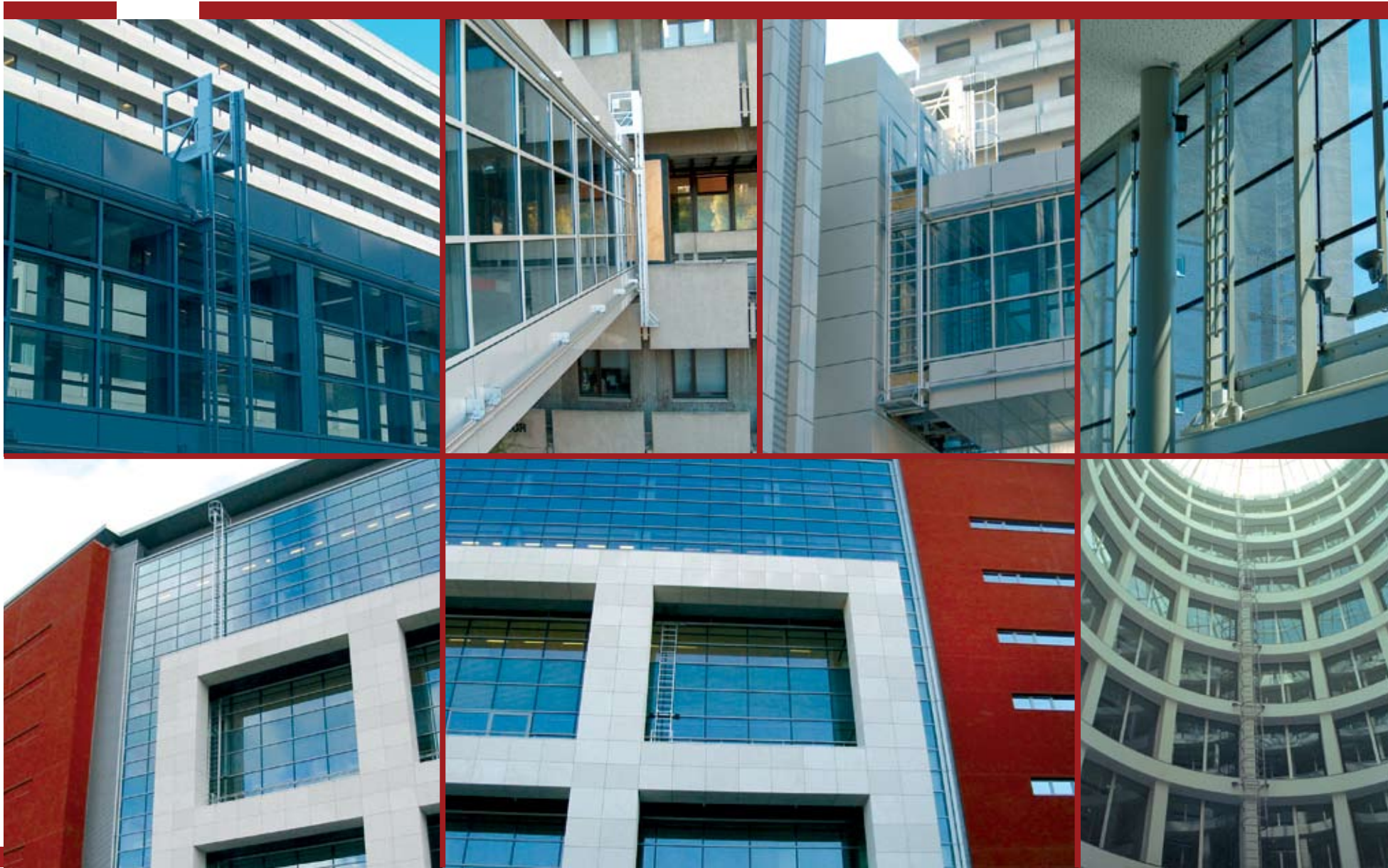
Round rail,
curved façade

Round rail,
polygonal
façade

I-rail, straight façade



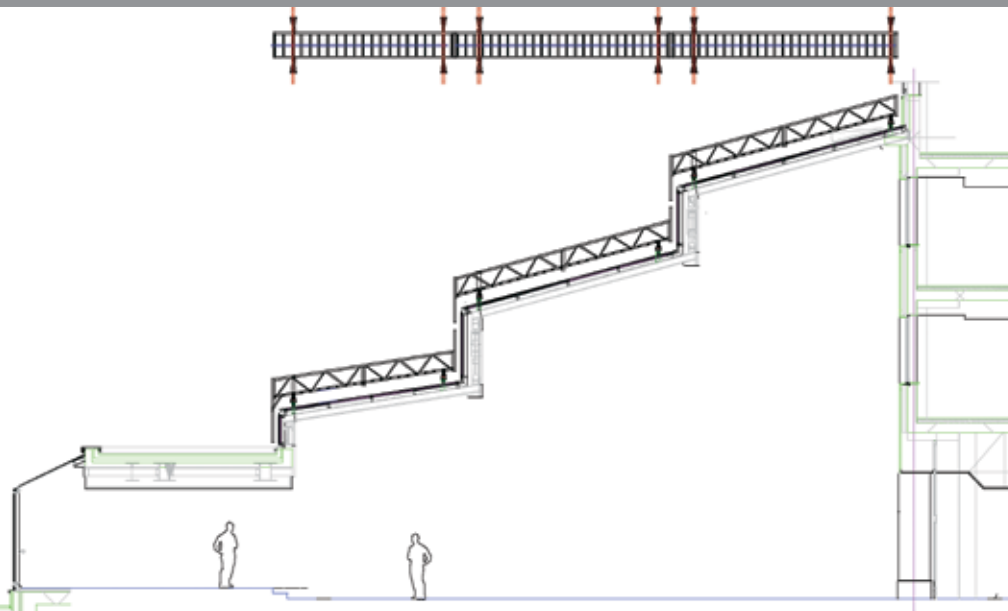
VERTICAL LADDER



REINFORCED SLOPED LADDER



REINFORCED SLOPED LADDER WITH SAFETY RAIL



VERTICAL LADDER WITH PLATFORM: "WASHLIFT" (1/2)



The Washlift has been useful in many situations.

CE



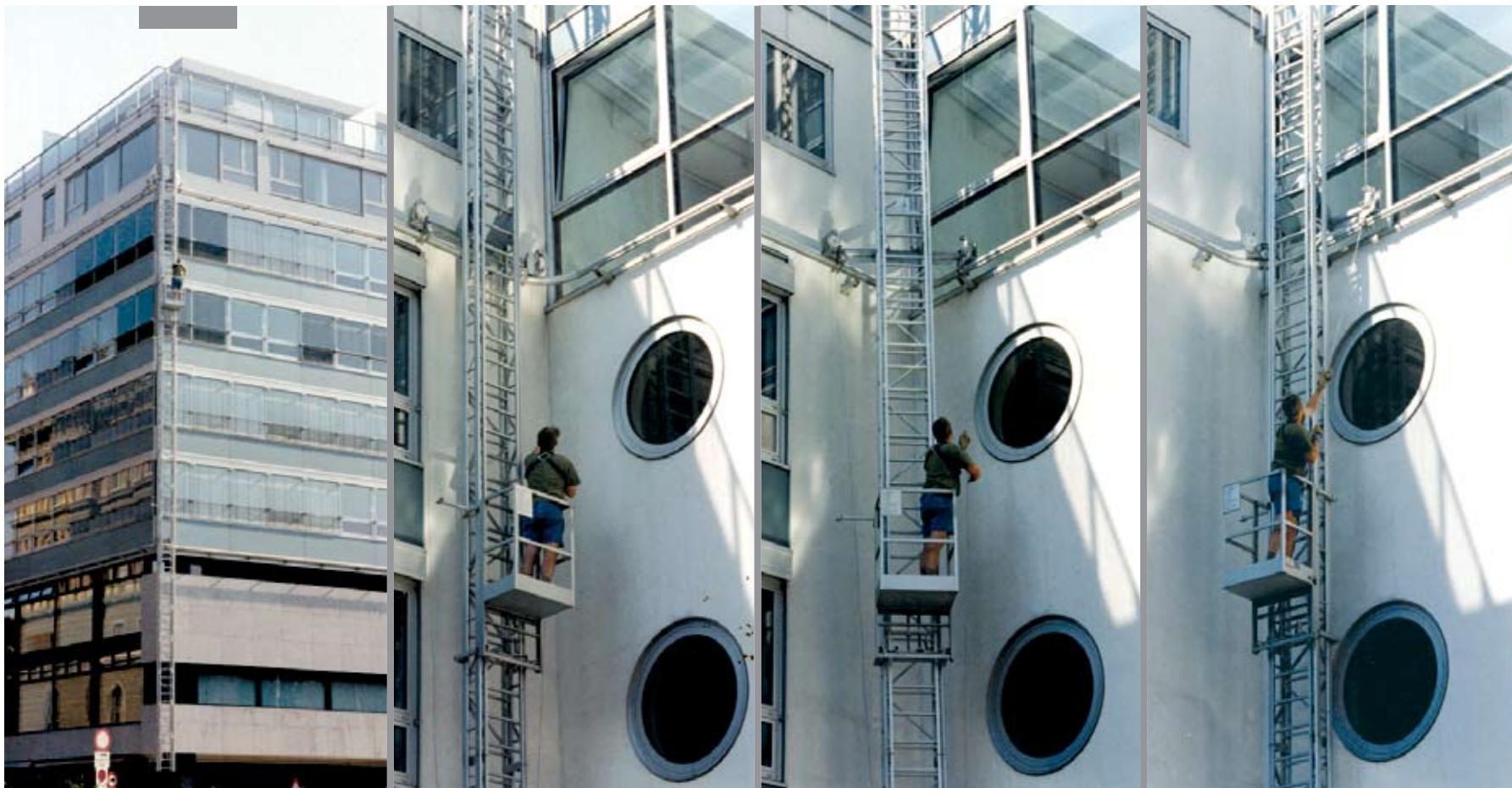
The user hauls up the platform, which is connected to his safety belt. The weight of the platform is 37 lb or 17 Kg.



A fold-away platform can be provided.



VERTICAL LADDER WITH PLATFORM: "WASHLIFT" (2/2)



The Washlift can easily pass both interior and exterior corners of the façade.

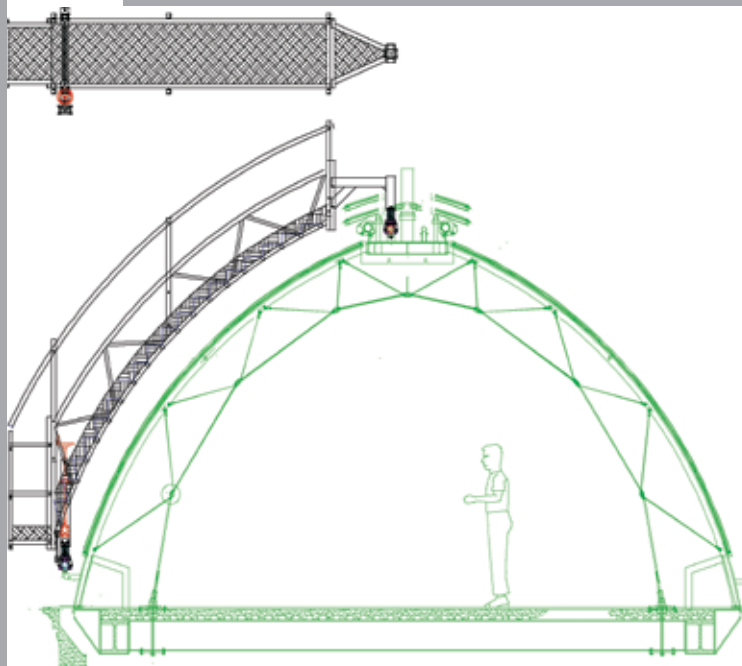
REINFORCED WORKING STRUCTURE, VERTICAL OR SLOPED (1/2)



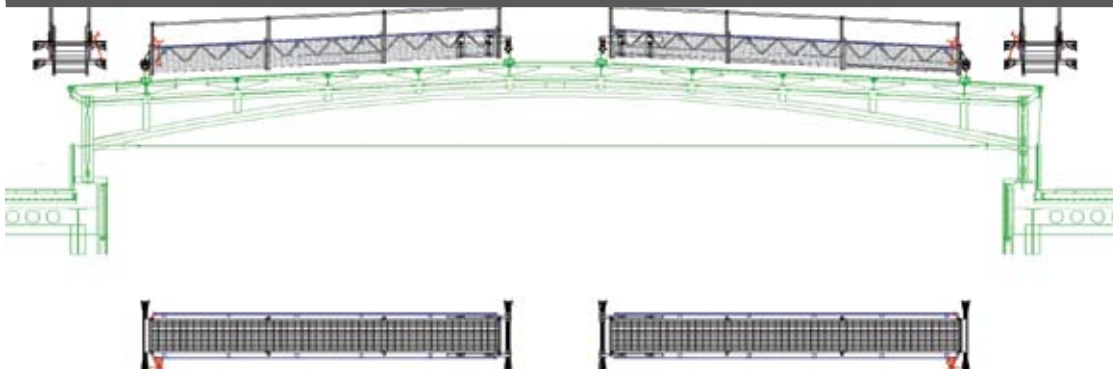
REINFORCED WORKING STRUCTURE, VERTICAL OR SLOPED (2/2)



CURVED STAIR OR LADDER STRUCTURE

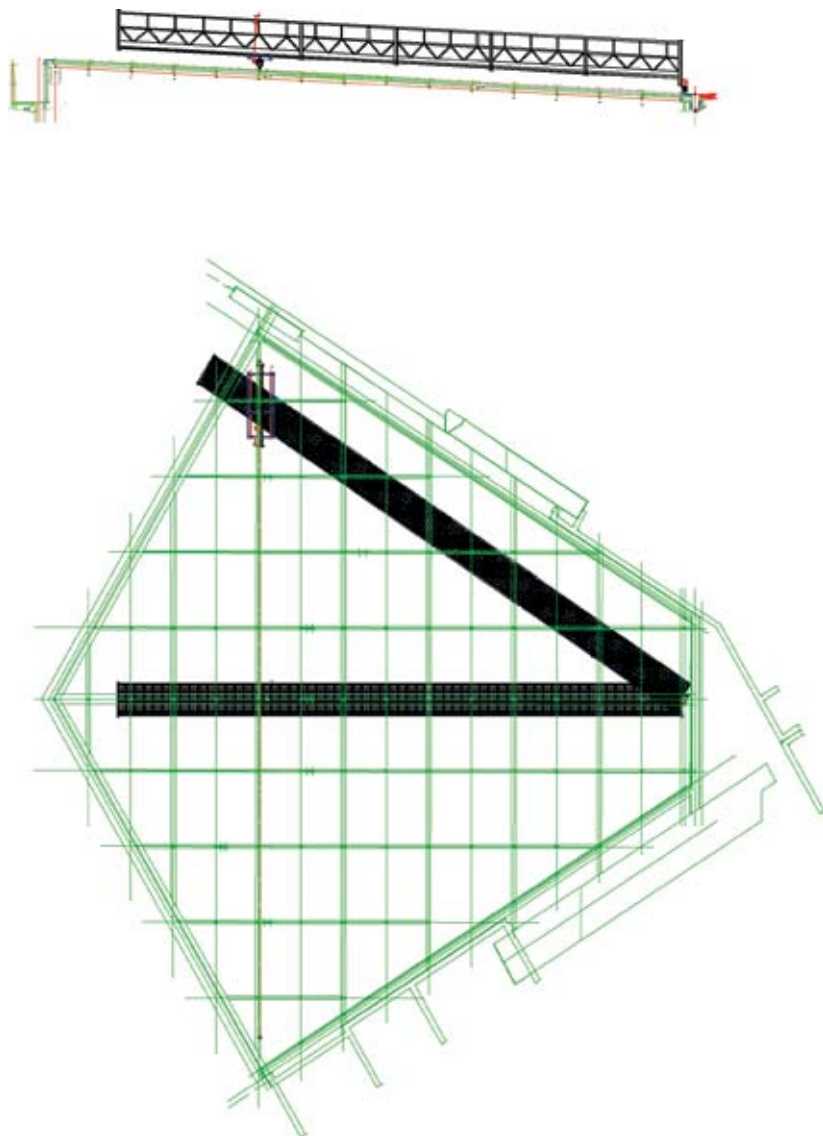


HORIZONTAL PLATFORM

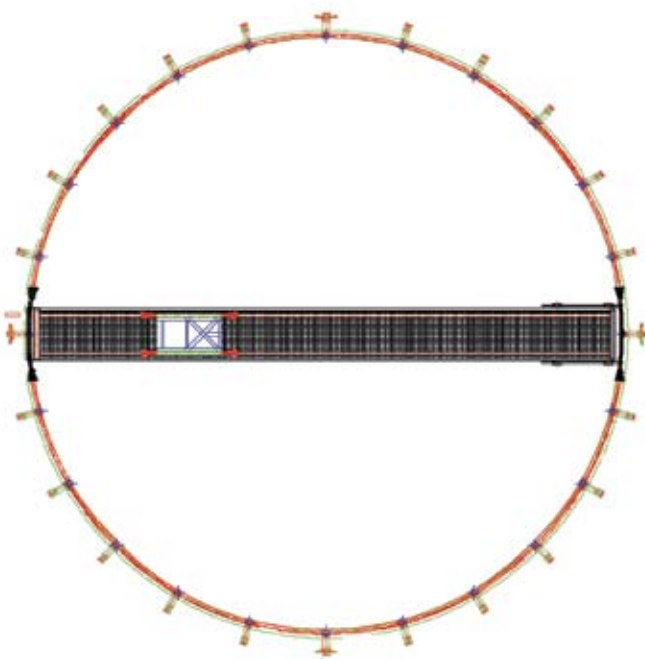
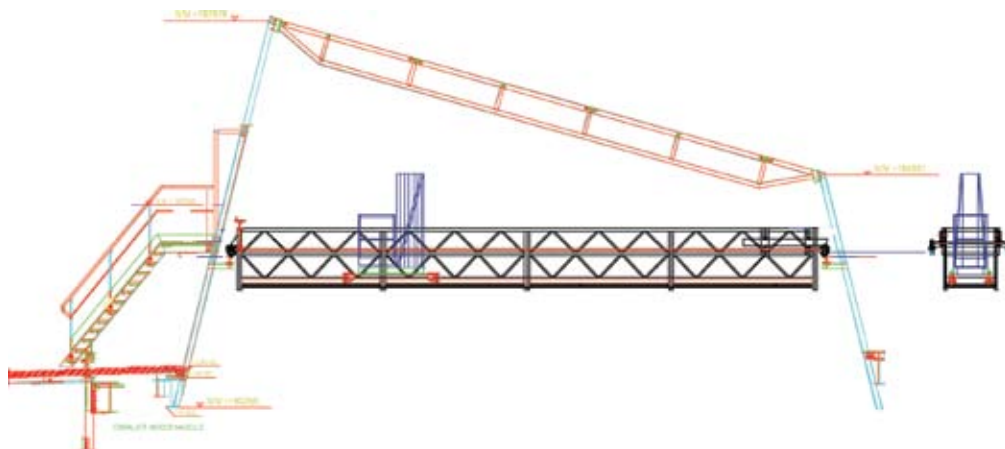


Example: reinforced working platform with mobile gantry
70 ft or 21 m span
1750 lb or 800 Kg useful load

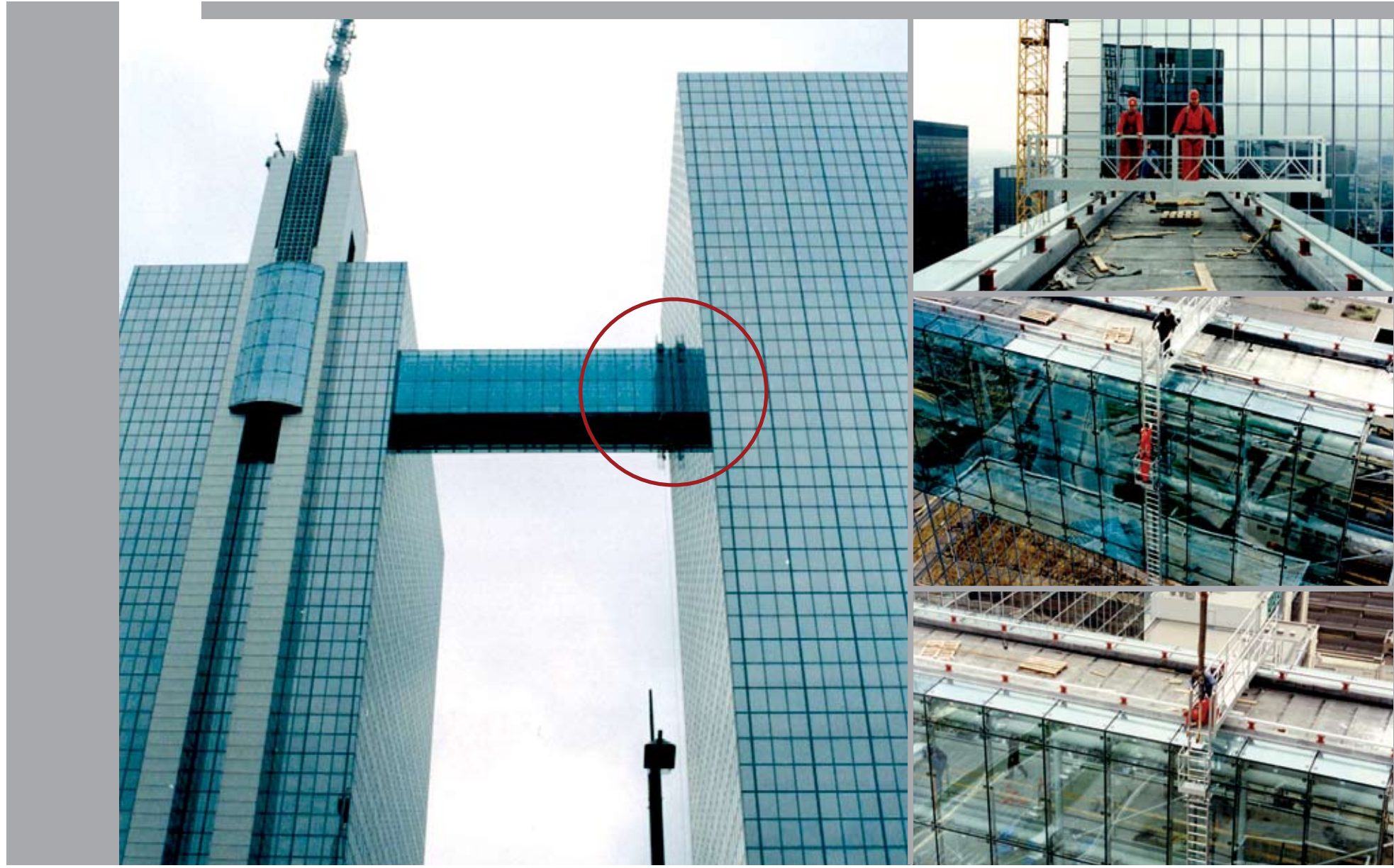
PIVOTING PLATFORM



PLATFORM WITH MOBILE, TELESCOPIC GANTRY

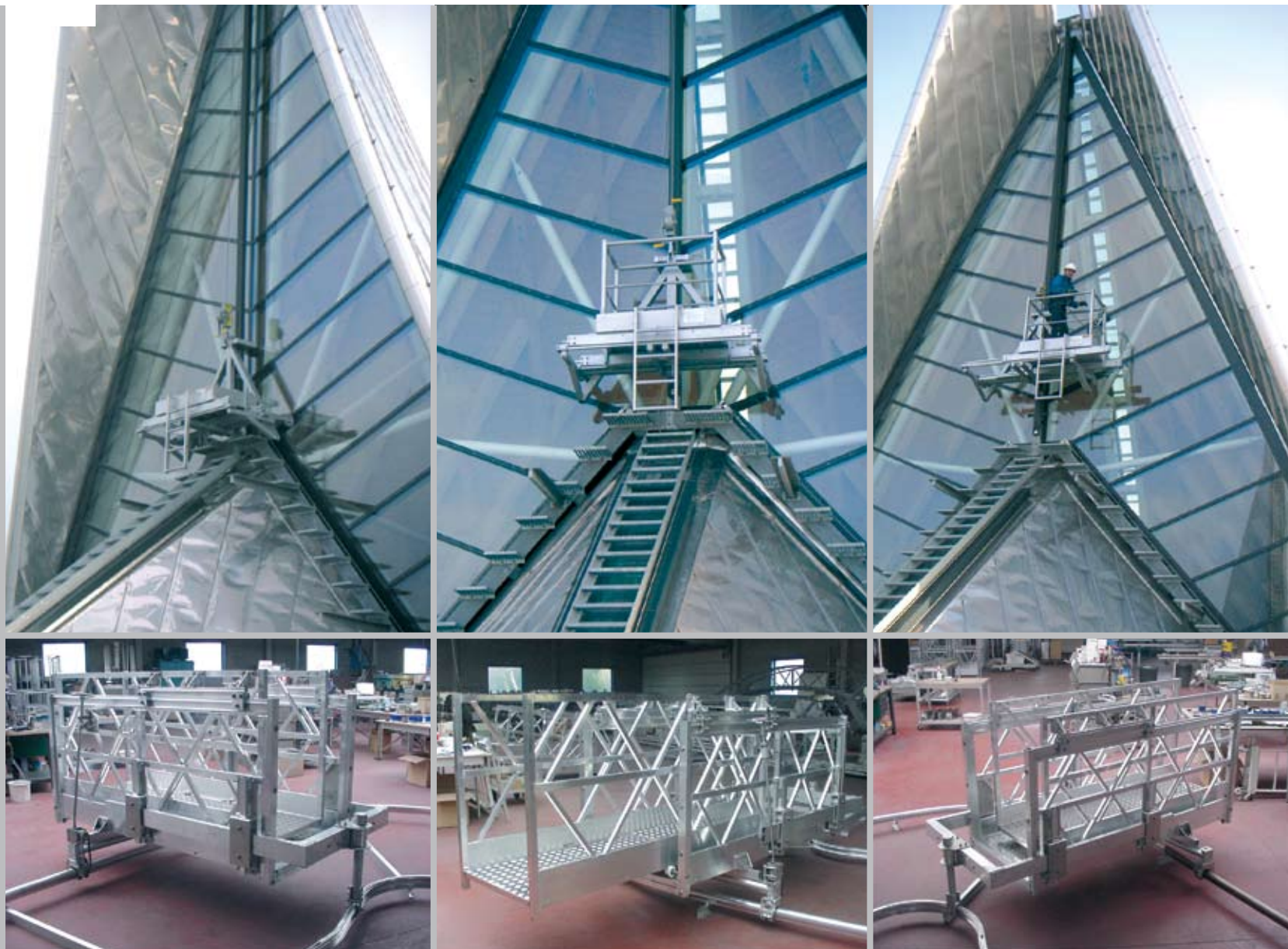


PLATFORM COMBINED WITH WASHLIFTS



MOBILE ACCESS SYSTEMS
WORKING STRUCTURES

EXCEPTIONAL DESIGNS



CUSTOM PLATFORMS FOR THIRD PARTY BUILDING MAINTENANCE UNITS

